

Redirect Query in MarushkaDesign



GEOVAP

CONTENTS

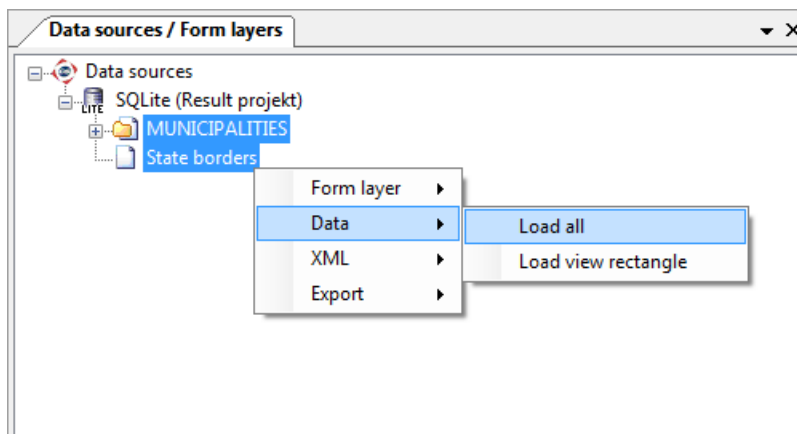
1	AIM OF THE EXAMPLE.....	2
2	WORKING WITH EXAMPLE	2
3	DIALOG BOX SAMPLE.....	3
4	A BRIEF DESCRIPTION OF THE EXAMPLE IN MARUSHKADESIGN	5

1 Aim of the Example

In this example we will demonstrate redirect using Redirect query in MarushkaDesign. This example was created in version 4.0.1.0, so it does not have to be compatible with older versions.

2 Working with Example

- Unzip the **RedirectQuery_EN.zip** into **c:\MarushkaExamples** folder. The target folder must be respected due to interconnection of paths with the project. In the case of placing the files in the different folder, it would not be possible to work with an example.
- Open the **RedirectQuery_EN.xml** in MarushkaDesign environment.
- Select all form layers in SQLite data store, in context menu choose Data – Load all:



- In map window choose „Fit all“:



- Launch the local web server:



3 Dialog Box Sample

Fig 1: Query result *Search with bing* for element Brno

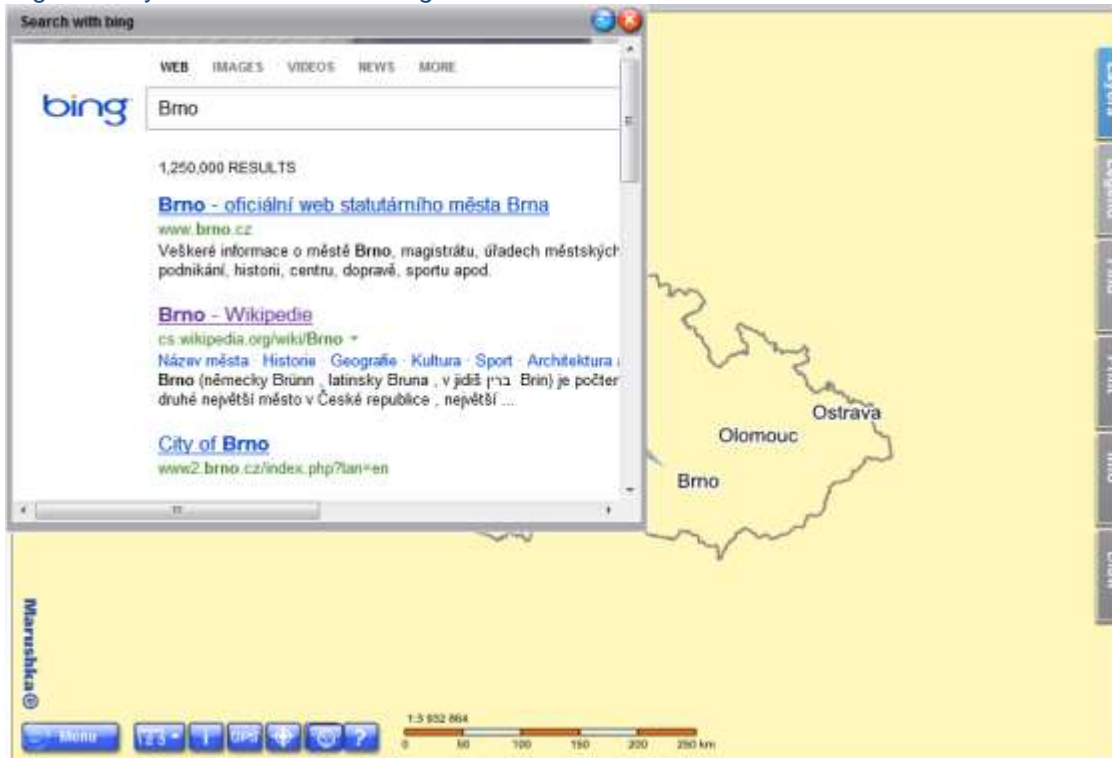


Fig 2: Query result *Search on Wiki* for element Brno



Fig 3: Query result *Redirect*

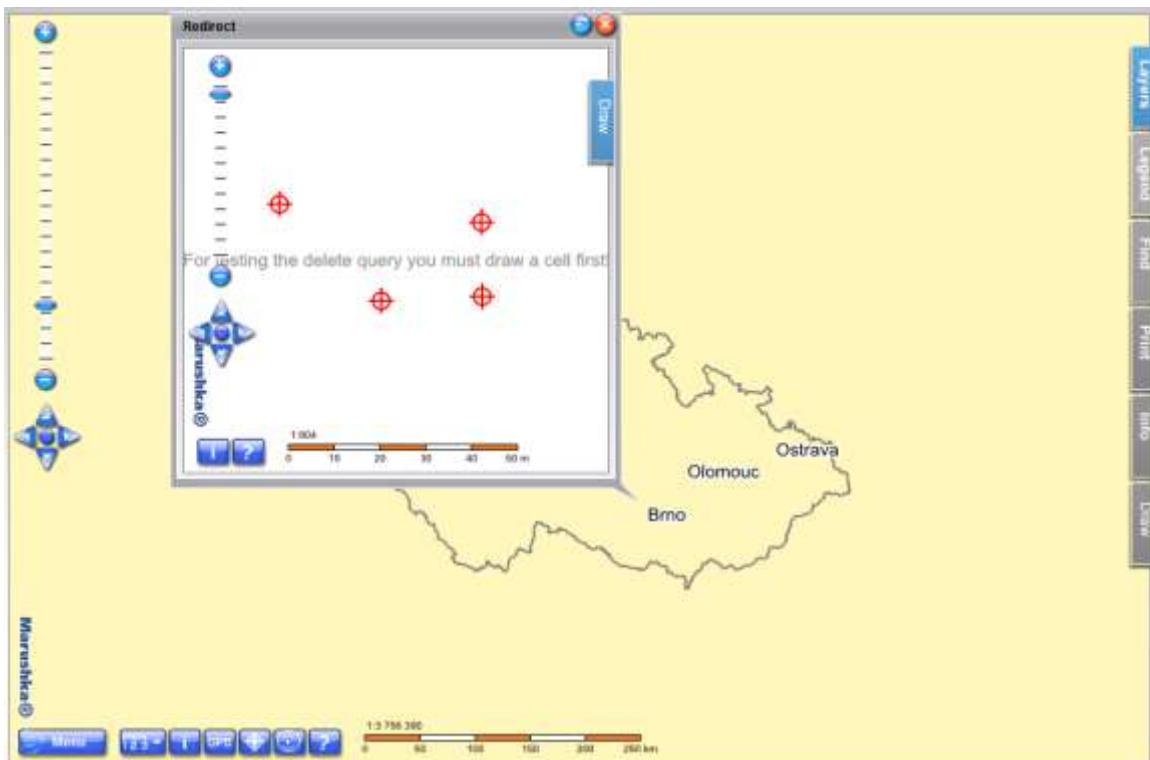


Fig 4: Query result *Open Marushka web started using application icon*



4 A Brief Description of the Example in MarushkaDesign

This example contains a SQLite database with seven form layers. Form layers in folder *MUNICIPALITIES* displays texts from the database table OBCE. Each of these layers has set a different font size using pseudo columns *SET_PARS_HEIGHT* and has also set different scale ranges, when it is displayed. For these layers were also used pseudo columns *SET_INFO_ICON_TEXT* and *SET_INFO_ICON_LABEL*, which are adjusting the text, resp. additional texts of municipalities. Pseudo column 'TRUE' *SET_INFO_ICON_COVER* causes overlap of point elements by transparent information icons. Form layer *State border* only draws the line of the Czech Republic national border.

In the query library are 4 information queries type **Redirect**.

- 1) The first query is named **Search with bing**. It is a specific type of information query that allows redirection to a web site with any parameter, here specifically to <http://www.bing.com/search>.

SQL query template (*SlqStmtTemplate*) must contain column URLADDRESS and parameters, that will be added according to the selected element. Query must contain a parameter `~(long)ID~`, this parameter is substituted before evaluating by ID value of the graphic element. Specifically, in this example, the query template *SlqStmtTemplate* looks as follows:

```
SELECT 'http://www.bing.com/search' URLADDRESS, NAME "q" FROM OBCE
WHERE id=~(long)ID~
```

The query is set to display the result *InPopUpBubble* with size 400*600 pixels.

The resulting redirect address is e.g.: <http://www.bing.com/search?q=Brno>.

- 2) The second query is called **Search on Wiki** and allows redirection to website of the specific Czech municipality on Wikipedia. SQL query template (*SlqQueryTemplate*) contains essentially the same parameters as in the previous query:

```
SELECT 'http://cs.wikipedia.org/w/index.php' URLADDRESS, NAME "search"
FROM OBCE WHERE id=~(long)ID~
```

The query is displayed in a new window of 400*1000 pixels; it is set in the query properties in item *ResultHeight*, respectively *ResultWidth*.

NAME is a value of database column for element with `~ID~`.


The resulting redirect address is e.g.: <http://cs.wikipedia.org/wiki/Brno>.


- 3) The third query is named **Open Marushka web**. Generally, it allows redirection to any website without a parameter. Here it is specifically website <http://marushka.geostore.cz/en/>.

The query is executed by the application button, so it is not assigned to any graphical element, i.e. it has no `WHERE id=(long)ID~` phrase and therefore there is no need to enter the table name.

The query has a following form: `SELECT 'http://marushka.geostore.cz/en/' URLADDRESS`

This query has set *IsApplication* value to 'True' and in item *ApplicationButton* has set an icon for the button, which will start this query.

In the event that for this query was not selected any *ApplicationButton*, the query (or a list of queries) will display in the local web server under the icon .

In this example the query is activated by the icon  from the functional keys menu in left bottom corner. This query is displayed in the panel.

- 4) The last query is called **Redirect** and it is similar to the previous query, except that in this case the query is not set to be an application. Also, it is a query without a parameter, which displays a new iframe with different, but fully functional MarushkaDesign project. This can for example be used for detailed display (specific map details) of the selected element (e.g. for point feature substation is displayed a detail of technical drawing).

There is a possibility to set the item value **RedirectMethod** either to GET or POST, which are query methods in the HTTP protocol. You can read about GET and POST methods e.g. here: https://en.wikipedia.org/wiki/Hypertext_Transfer_Protocol#Request_methods.

It is also possible to use the parameter *TargetName*, which defines the dialog box title, in which the query will open. It is used to e.g. if there are more queries, so that the one type of queries is opened in the same browser window and not always in a new window.

In theme it is possible to set *LayOutWindowTargetName* where you can name the window for displaying the results. This makes it possible to functionally link individual applications.