

# **Work with Module 324Cnv in MarushkaDesign**



**GEOVAP**

# CONTENTS

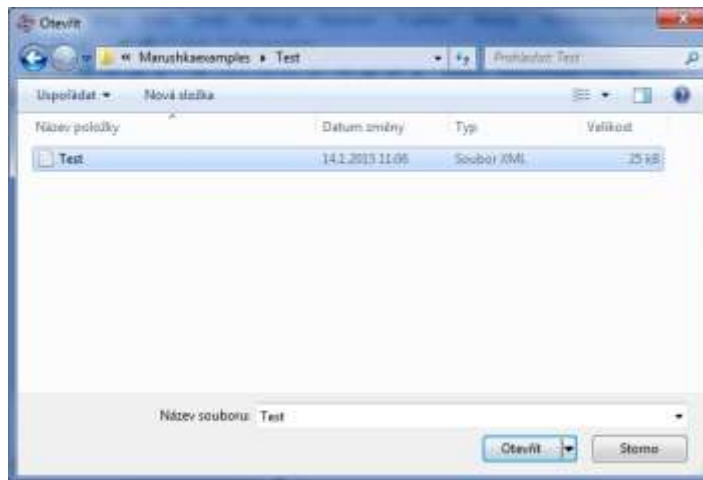
1	AIM OF THE EXAMPLE.....	2
2	WORKING WITH EXAMPLE .....	2
3	A BRIEF DESCRIPTION OF THE EXAMPLE IN MARUSHKADESIGN .....	3

## 1 Aim of the Example

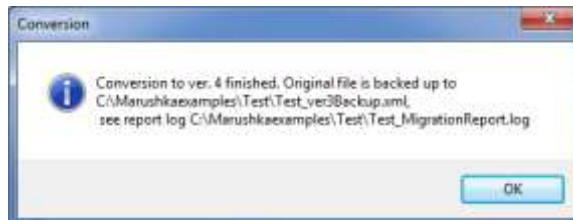
In this example we will demonstrate conversion from version 3 to version 4 in MarushkaDesign. This example was created in version 4.0.1.0, so it does not have to be compatible with older versions.

## 2 Working with Example

- If you do not have installed module 324Cnv, install it. In the Menu click on *Tools ~ Install package*, here check the option *324Cnv* and then click on *Install*.
- Restart application MarushkaDesign.
- In MarushkaDesign environment click in menu on *Modules ~ Convert Ver3 -> Ver4*.
- Next select the file, which you want to convert, and then click on *Open*.



- After conversion, a dialog box displaying further information pops up

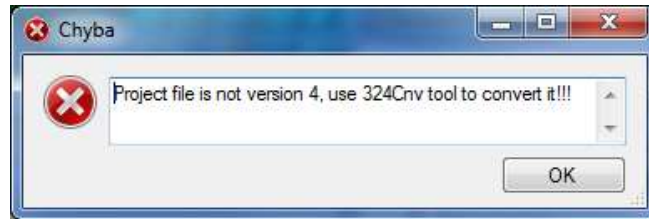


- In the appropriate folder are created 3 files. The first one is the file version 4, which has the identical name as the original file, the backup file, which is the copy of the original file, to which was added string *\_ver3BackUp* and file *MigrationReport.log*, where are listed further information about the conversion.

↑ Name	Ext	Size	Date	Attr
↑ [..]		<DIR>	14.01.2015 11:21	—
Test	xml	24 875	14.01.2015 11:21	-a-
Test_MigrationReport	log	620	14.01.2015 11:21	-a-
Test_ver3Backup	xml	20 413	25.01.2013 11:33	-a-

### 3 A Brief Description of the Example in MarushkaDesign

Since there are quite significant differences between version 3 and 4 of MarushkaDesign, you cannot open project created in version by MarushkaDesign version 4. If you try this, the following error dialog window pops up.



The version of the project can be easily identified, so that the user opens XML of the given project in any XML editor or e.g. in the Notepad. On the third row is since version 4.0.0.0 property version, showing version number, in which the project was created.

```
<Version>4.0.1.0</Version>
```

Therefore, it is necessary to use this particular tool and convert the given project into version, which can be opened in the current version. The procedure of project conversion is described in [chapter 2](#) of this document.